

# "I'M 'SPOILED' NOW FOR ANY CAR BUT *Plymouth*"

A CERTIFIED INTERVIEW WITH OFFICER HARVEY HAYES, DELAWARE STATE POLICE STATION No. 2, WILMINGTON, DELAWARE



"One of the boys clocked me. She's good for 60 in second—85 in high!"



"Most cars 'eat' oil at that speed—but my gauge always reads 'full!'"

*"I couldn't Stand My Old car after Driving a Plymouth on Duty"*

THEY'VE had three Plymouths at Station No. 2. Harvey Hayes drives one—when he isn't on a motorcycle.

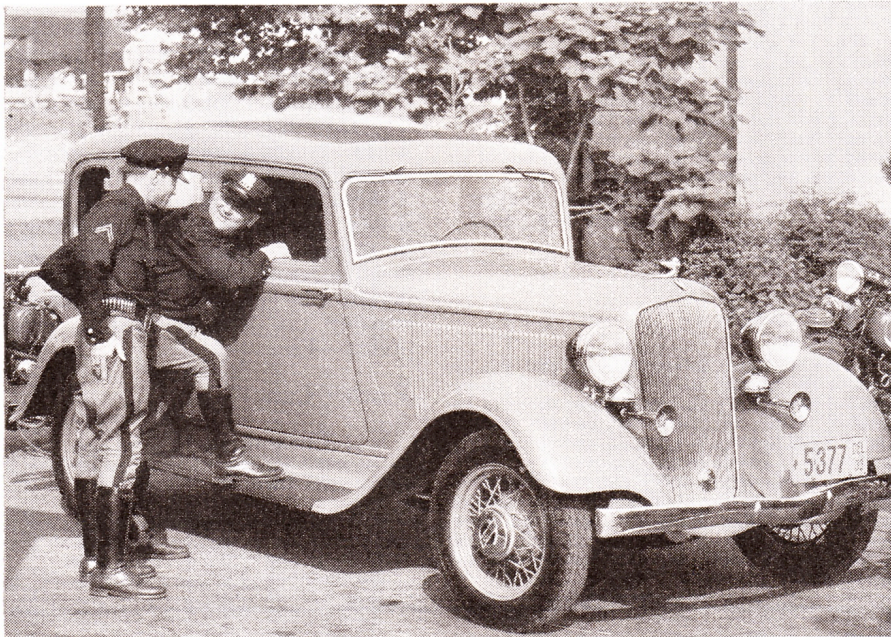
And "pushing his own crate home" (to use his words) didn't give him any thrill after riding behind Floating Power from noon till midnight.

Now he has his own Plymouth. So have five others out of the eleven men at his station.

As Hayes says, they're "spoiled" for anything else—after learning first hand how Plymouth flashes away on pick-up, slips in and out of traffic, and brakes to smooth, quick, even stops in the tight spots.

Unless you're a state policeman, you may never get to put Plymouth's accelerator "down to the floorboards." But you *can* sample Floating Power engine mountings—hydraulic brakes—rigid-X double-drop frame. Just "look at all three" low-priced cars . . . and ride in Plymouth.

There's a liberal education in car values in that way of buying. Start looking now—by seeing Plymouth.



"How do the boys like it? Say, there are eleven of us here . . . and six of us have Plymouths of our own! And we get plenty of chance to judge cars on *this* job!"

SEE PLYMOUTH AT CHRYSLER MOTORS BUILDING, CHICAGO CENTURY OF PROGRESS

Standard: 2-door sedan \$465; 4-door sedan \$510; rumble seat coupe \$485; business coupe \$445. De Luxe: 2-door sedan \$525; 4-door sedan \$575; conv. coupe \$595; rumble seat coupe \$545; business coupe \$495. Subject to change without notice.



## NEW PLYMOUTH SIX

WITH PATENTED FLOATING POWER